



X-TRAIL





## GET INSIDE. GO OUT THERE.

You need a vehicle that's as open to adventure as you are. With the capability to take you where you want to go. And the comfort and technology to make the trip back just as much fun. And while you're at it, why not bring a real sense of style and a unique point of view? So load up and let's go. We're ready. The next generation Nissan X-TRAIL.



□ Premium leather steering wheel

□ Gloss black trim with metallic accents

## PREMIUM DETAILS THAT ARE A CLASS ABOVE THE REST

Sporty D-shaped steering wheel

Available double-stitched leather seats

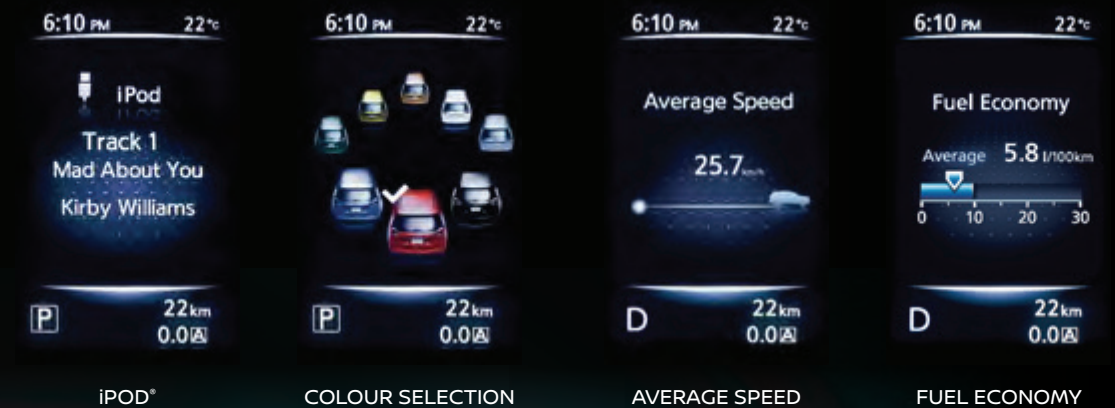
Gloss black trim with metallic accents

# INNOVATION THAT'S RIGHT IN FRONT OF YOU.

With so much going on around you, it's easy to get distracted. Advanced Drive-Assist Display (ADAD) is a full colour 5" display to help you stay on track and on top of things when you're on the go in your Nissan X-TRAIL.

From fuel economy to caller ID and so much more\*. ADAD gives you all the information you need directly in front of you, keeping you focused on the road ahead.

\*Features and functions may vary by grade



## SLIDE, GLIDE AND SWING WIDE.

**A SMARTER 2ND ROW.** Thanks to the Nissan X-TRAIL's flexible seating system, this 2nd row is truly first class. The 60/40 split seat slides forward for easy access and adjusts to give you more cargo space, more legroom, and everything or anything in between. You can also recline the seats, when it's time to just relax.

**OPTIONAL 3RD ROW.** The Nissan X-TRAIL's folding 3rd-row 50/50 split seat gives you additional versatility. Perfect for accommodating extra passengers and their gear, it also folds down completely to make a flat cargo floor for maximum storage capacity.

**REAR 77° WIDE OPENING DOORS.** The Nissan X-TRAIL's rear doors swing out to nearly 80°, giving you easy access to the kids, the cool-box, the adventure gear... making life so much easier.



77°

REAR WIDE  
OPENING DOORS



RECLINING  
2ND ROW

SLIDING  
2ND ROW

## SEAT SEVEN OR FIVE WITH EASE

Sit back and enjoy the stunning view through the available panoramic sunroof. Best-in-class front headroom and thoughtful 2nd row vents help keep everyone comfortable. An available 3rd row of seats with a 50/50 folding split is ideal solution when you need to fit more family members and friends inside of your Nissan X-TRAIL – or you can fold it down completely, making the cargo floor flat and maximizing the storage space.



**PACKING SPACE SUITED  
FOR ANY ADVENTURE**



01



02



03

### **FLEXIBLE SPACE.**

With seating and luggage space that fits whatever your requirements are, the Nissan X-TRAIL gives you room to manoeuvre.

- 01** The 2nd row seat fold-down centre armrest, for long items while carrying 4 occupants.
- 02** Generous loading space even with 3 occupants.
- 03** Maximized luggage room with the 2nd and 3rd row seats folded down.

**Rear 77° wide opening doors.** The Nissan X-TRAIL makes it easy to get it all in – and out – with rear doors that obligingly swing open 77°.



**DRIVE MORE LIKE A PRO**  
**NISSAN X-TRAIL, SUBTLY**  
**MAKING YOU A BETTER DRIVER.**

The Nissan X-TRAIL is so agile and responsive, it actually improves your driving. Nissan's Chassis Control technologies make it smooth to handle and secure to drive – ensuring an exciting yet comfortable journey for everyone on board.

So get inside and have some fun.

**INTELLIGENT RIDE CONTROL.**

Take the rough with the smooth. This system applies subtle braking to prevent turbulence over bumps and enhances the overall comfort of the ride for the whole family.



**INTELLIGENT TRACE CONTROL.**

Keep cool when cornering. This system adjusts brake pressure on individual wheels to keep you on an optimal line through turns.



**INTELLIGENT ENGINE BRAKE.**

Feel the curve. This system controls the CVT as though you're driving manual through a light bend. It shifts down to smoothly decelerate on your way through the curve, then shifts back up to accelerate on your way out.





**NISSAN INTELLIGENT DRIVING**

**ADAPT TO ANY TYPE OF CONDITION IN THE BLINK OF AN EYE**

The Nissan X-TRAIL can adapt to changing conditions 30 times faster than the blink of an eye. Whether it's sand or gravel, rain-covered surfaces or a tight turn, the system will automatically send power to the wheels that need it the most. Even in ideal conditions, the Nissan X-TRAIL's AWD system pays big dividends: getting a grip has never felt better.



**HILL START ASSIST/AUTO HOLD.** No rolling backwards. With Hill Start Assist, encountering an incline is simple. It applies the brakes to all four wheels to hold the car for 3 seconds, before the drive fed to the wheels releases them. With the Auto Hold function activated, the brakes are held for 3 minutes on any gradient.



**INTELLIGENT 4x4.** With Nissan X-TRAIL's All-Mode 4x4-i, you've got a system that's capable on-road and off. You can choose full-time 2WD for maximum efficiency. Auto Mode constantly monitors conditions and adjusts the balance of power between front and rear.





126kw 233nm

**INTELLIGENT POWER**  
**GO FURTHER WITH**  
**A CLEAN CONSCIENCE**

Looking for excellent fuel economy in a roomy crossover that's lots of fun to drive? That's what you get with the Nissan X-TRAIL. From exterior aerodynamics that whisper through the wind to advanced engines and a virtually gearless XTRONIC transmission, it takes efficiency and performance to the next level.

## NISSAN SAFETY SHIELD PHILOSOPHY

# INNOVATION THAT LOOKS OUT FOR YOU.

At Nissan safety is more than just a philosophy; it's an integral part of every vehicle we make. Our comprehensive approach to safety guides the engineering and development of all our cars - and it not only works to keep you and your family safe, it gives the driver the self-assurance to know that they can rely on their vehicle, and confidently handle unexpected situations.



### HELPS THE DRIVER TO MAINTAIN COMFORTABLE DRIVING

Even when a risk has not appeared, Nissan technologies make it easier for the driver to maintain safe driving conditions. Some of these innovations reduce the driver's burden, while others enhance visibility and awareness of the immediate surroundings at night and when parking, for example.



### HELPS THE DRIVER TO RECOVER FROM DANGEROUS CONDITIONS TO SAFE DRIVING

When a risk appears, warnings and automatic countermeasures help the driver avoid it.



### HELPS MINIMIZE THE DAMAGE WHEN A COLLISION IS UNAVOIDABLE

In cases when a crash cannot be avoided, additional Nissan technology helps reduce injuries and damage by activating the brakes, restraining passengers, and applying other measures.



In the commitment to "Real World Safety", Nissan pursues innovation as part of its Safety Shield concept. Based on the idea that cars should help protect people, advanced, proactive safety technologies help driver and passengers to avoid danger and injury in a wide range of circumstances.



### BRAKE ASSIST (BA)

Senses emergency braking and automatically helps to apply maximum braking pressure if needed.



### 6 AIRBAGS STANDARD

Dual front, side and curtain SRS airbags will protect the driver and all passengers.



### HILL START ASSIST (HSA)

Prevents roll-back on an incline and provides secure and easy handling and stress free driving.



### VEHICLE DYNAMIC CONTROL (VDC)

VDC automatically controls brake and engine output to enhance stability when sensors detect that the vehicle might slip sideways due to steering, braking or accelerator pedal operation.



### HILL DESCENT CONTROL

Descend on a steep decline safely, as HDC controls the brakes for you, letting you focus on steering. (2.5l models only)



### ELECTRONIC BRAKE-FORCE DISTRIBUTION (EBD)

Enhances braking control, to optimise braking performance with loads of various weights.



### ANTI-LOCK BRAKING SYSTEM (ABS)

In the event of an emergency situation, ABS ensures maximum brake force is applied and maintains control by preventing wheel lock-up.



### SEATBELT PRE-TENSIONERS & LOAD LIMITERS.

Seatbelt pre-tensioners on the front seats automatically tighten the seatbelts in certain frontal collisions, while load limiters are designed to give a little to absorb the belt force load transmitted to the front occupants.



### SIGNATURE HEADLAMPS

LED headlamps with automatic leveliser, front fog lamps and daytime running lights provide distinct projection to enhance visibility at night and in poor conditions.

# ACCESSORIES FOR EVERY OCCASION

From the city streets to the great outdoors, your Nissan X-TRAIL is ready to take on any adventure, thanks to its versatile range of Nissan Genuine Accessories. Whether it's towing the campervan, checking your tyre pressure or connecting your favourite music playlist, the versatile range of Nissan Genuine Accessories ensures all your road trip needs are covered.



## **Weathershields (Slimline, Front & Rear)**

X-TRAIL branded Weathershields that protect the cabin against the elements when windows are partially open. A slim finish that is perfectly tailored to your vehicle.



## **Towbar**

Maximise your versatility with a quality towbar that has been engineered and tested to ensure a maximum breaking capacity of 1500kg and vertical load on ball of 75kg.



## **Rubber Floor Mats (Front & Rear)**

X-TRAIL branded Rubber Floor Mats designed with a raised outer perimeter to contain any dirt, grass and gravel whilst protecting the cabin floor.



## **Bonnet Protector (Smoked)**

Tinted X-TRAIL branded Bonnet Protector complements the appearance of your Nissan and protects the leading edge of your bonnet from stone chips and other road debris.



## **Headlamp Protectors**

Protect your vehicle's headlamps from stones and other road debris with these Headlamp Protectors.



## **Nudge Bar\***

Protect your vehicle from minor bumps and nudges with this Nudge Bar, which is integrated to your vehicle to complement its look. LED Light Bar\* can be fitted.

Exterior Accessories		Model Grade Application	
EXTERIOR STYLING		ACENTA	TEKNA
Body side moldings (unpainted)	KE7604C52P	X	X
Body side moulding set - colour Red Solid (AX6)	F38704CE0A	X	X
Body side moulding set - colour Military Green (EAN)	F38704CE0B	X	X
Body side moulding set - colour Black Pearl (G41)	F38704CE0D	X	X
Body side moulding set - colour Gun Metallic (KAD)	F38704CE1A	X	X
Body side moulding set - colour New Silver (K23)	F38704CE0E	X	X
Body side moulding set - colour Brilliant White (QAB)	F38704CE1B	X	X
Body side moulding set - colour Greyish Blue (RAQ)	F38704CE1C	X	X
Rear bumper upper protector JPN (carbon effect)	H59104CE0A	X	X
Front over rider + front styling plate EU (package)	KE5406F04A	X	X
Side styling plate EU	KE7606F06A	X	X
Rear styling plate EU (Adapted for vehicles with towbar and w/o parking sensor)	KE5476F04C	X	X
Nudge bar AUS (black - integrated assembly)	F20646FLOAAU	X	X
Nudge bar MAXE (stainless steel)	tbe	X	X
Side steps MAXE (stainless steel)	tbe	X	X
Rear bumper styling bars MAXE (stainless steel)	tbe	X	X
INTERIOR UTILITY		ACENTA	TEKNA
Trunk entry guards (aluminium)	KE9674C520	X	X
Dog guard / Trunk separator	KE9643B53A	X	X
EXTERIOR UTILITY		ACENTA	TEKNA
Thule cross bars for vehicle with OE roof railings	775869	X	X
Thule cross bars for vehicle without OE roof railings	N3133753960	X	X
Bosal tow bar - LED illumination	tbc	X	X
PROTECTION		ACENTA	TEKNA
Headlight covers (clear)	EGR156550E	X	X
Bonnet guard (smoke)	EGR148540EDS	X	X
Window visors (smoke)	EGR150090E	X	X
SAFETY & SECURITY		ACENTA	TEKNA
Wheel locks with two adaptor keys	LNG12A42	X	X
Window film	SECFITXTR14	X	X
Interior Accessories			
PROTECTION		ACENTA	TEKNA
Seat covers Grey	TAKXTSCG	X	X
Seat covers Carbon Black	TAKXTSCB	X	X
Carpet set 5pc for 5 seater	777T32MY14L	X	X
Carpet set 5pc for 7 seater	777T32MY14L7	X	X
Rubber mat - Front & 2nd rear set - RHD	KE7584B089	X	X

# MADE FOR FAMILY ADVENTURE

Nissan Genuine Accessories are designed to make your family adventures bigger and more enjoyable, enabling you to take all the essential gear for an unforgettable getaway.



### Roof Bars (Flush Style)

Attractive and practical Roof Bars with a sleek finish and maximum carrying capacity of 80kg.



### Roof Bars (Through Style)

Attractive and practical Roof Bars with a sleek finish and maximum carrying capacity of 80kg.



### Cargo Barrier

Cargo Barrier protects vehicle occupants from any loose items during sudden braking. Maximum load mass of 60kg.



## COLOURS



Orange - PM - **EBB**



Tinted Red - CP - **NBF**



Blue - PM - **RAW**



Dark Brown - P - **CAS**



White - 3P - **QAB**



Silver - M - **K23**



Gray - M - **KAD**



Black - P - **G41**



Red - S - **AX6**



Military Green - PM - **EAN**

## ALLOY WHEELS



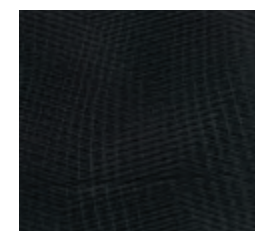
17" Alloy Wheel



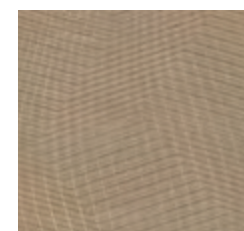
18" Alloy Wheel

## TRIMS

### VISIA & ACENTA.

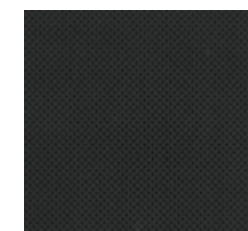


CLOTH BLACK



CLOTH BEIGE

### TEKNA



LEATHER BLACK



LEATHER BEIGE

## DIMENSIONS

- A:** Wheelbase: 2 705MM
- B:** Overall length: 4 640MM
- C:** Overall width: 1 820MM  
(1 830 MM with 19" tire)
- D:** Overall height: 1 710 MM  
(1 740 MM with roofrails)







Model		1.6 dCI Acenta	1.6 dCI Tekna	1.6 dCI Acenta 4WD	1.6 dCI Tekna 4WD	2.5 Acenta CVT 4WD	2.5 Tekna CVT 4WD
<b>COMFORT AND CONVENIENCE (CONTINUED)</b>							
Luggage hook: 4 pieces		Standard	Standard	Standard	Standard	Standard	Standard
Luggage box under storage with tonneau cover		Standard	Standard	Standard	Standard	Standard	Standard
Cup holder: 4		Standard	Standard	Standard	Standard	Standard	Standard
Bottle holder: 6		Standard	Standard	Standard	Standard	Standard	Standard
Front ashtray		Standard	Standard	Standard	Standard	Standard	Standard
Front cigarette lighter		Standard	Standard	Standard	Standard	Standard	Standard
Power socket 12V*2		Standard	Standard	Standard	Standard	Standard	Standard
Manual air conditioner - dial type		Standard	-	Standard	-	Standard	-
Full Auto AC + Dual zone climate control		-	Standard	-	Standard	-	Standard
Rear seat air conditioner vent with shut vent		Standard	Standard	Standard	Standard	Standard	Standard
Rear heater duct		Standard	Standard	Standard	Standard	Standard	Standard
Front ventilator in instrument panel		Standard	Standard	Standard	Standard	Standard	Standard
Electric sunroof: tilt and slide (one-touch open/close)		-	Standard	-	Standard	-	-
Rear tailgate manual		Standard	Standard	Standard	Standard	Standard	Standard
Front bumper		Standard	Standard	Standard	Standard	Standard	Standard
Rear bumper		Standard	Standard	Standard	Standard	Standard	Standard
Roof spoiler		Standard	Standard	Standard	Standard	Standard	Standard
Roof rail		-	Standard	-	Standard	-	Standard
Front mud guards		Standard	Standard	Standard	Standard	Standard	Standard
Rear mud guards		Standard	Standard	Standard	Standard	Standard	Standard
Side sill cover		Standard	Standard	Standard	Standard	Standard	Standard
Chrome outside door handle with i-Key request switch		Standard	Standard	Standard	Standard	Standard	Standard
<b>AUDIO, COMMUNICATION AND INFORMATION</b>							
Radio (AM/FM/RDBS, 1CD, USB/ IPOD/AUX/BT AUDIO, Handsfree )		Standard	Standard	Standard	Standard	Standard	Standard
4 Speakers		Standard	-	Standard	-	Standard	-
6 Speakers		-	Standard	-	Standard	-	Standard
Bluetooth Handsfree connectivity		Standard	Standard	Standard	Standard	Standard	Standard
Auxiliary jack and USB, iPod connectivity		Standard	Standard	Standard	Standard	Standard	Standard
Passenger airbag		Standard	Standard	Standard	Standard	Standard	Standard
Driver airbag		Standard	Standard	Standard	Standard	Standard	Standard

Model		1.6 dCI Acenta	1.6 dCI Tekna	1.6 dCI Acenta 4WD	1.6 dCI Tekna 4WD	2.5 Acenta CVT 4WD	2.5 Tekna CVT 4WD
<b>SAFETY</b>							
Front, side and curtain airbags		Standard	Standard	Standard	Standard	Standard	Standard
Driver 3 Point ELR, double pre-tensioner and load limiter		Standard	Standard	Standard	Standard	Standard	Standard
Rear seat: 3 point ELR (RH, LH & centre)		Standard	Standard	Standard	Standard	Standard	Standard
3rd row seatbelt: 3POINT ELR (RH & LH)		Standard	Standard	Standard	Standard	Standard	Standard
Driver seatbelt adjust functionality		Standard	Standard	Standard	Standard	Standard	Standard
Passenger seatbelt adjust functionality		Standard	Standard	Standard	Standard	Standard	Standard
2nd row seat ISOFIX & Tether anchor		Standard	Standard	Standard	Standard	Standard	Standard
Immobiliser, alarm & hood lock switch		Standard	Standard	Standard	Standard	Standard	Standard
Anti-lock Braking System (ABS) and Electronic Brake force Distribution (EBD)		Standard	Standard	Standard	Standard	Standard	Standard
Brake Assist (BA)		Standard	Standard	Standard	Standard	Standard	Standard
Vehicle Dynamic Control (VDC), Hill Descent Control (HDC), Hill Start Assist (HSA)		-	-	-	-	Standard	Standard
Vehicle Dynamic Control (VDC), Hill Start Assist (HSA)		Standard	Standard	Standard	Standard	-	-
Raised rear brake light		Standard	Standard	Standard	Standard	Standard	Standard
Driver seatbelt reminder		Standard	Standard	Standard	Standard	Standard	Standard
<b>WHEELS AND TYRES</b>							
225/65 R17 Non run flat		Standard	-	Standard	-	Standard	-
225/60 R18 Non run flat		-	Standard	-	Standard	-	Standard
All season tyres		Standard	Standard	Standard	Standard	Standard	Standard
Alloy wheel		Standard	Standard	Standard	Standard	Standard	Standard
Wheel size and type		17"x70" (alloy)	18"x70" (alloy)	17"x70" (alloy)	18"x70" (alloy)	17"x70" (alloy)	18"x70" (alloy)
Tyre size		225/65R17	225/60R18	225/65R17	225/60R18	225/65R17	225/60R18
Steel spare wheel tyre size		T155/90D17	T155/90D17	T155/90D17	T155/90D17	T155/90D17	T155/90D17



#### Nissan's commitment to the environment

Nissan's environmental philosophy embraces people, vehicles and nature. In the pursuit of a sustainable mobile society, the Nissan Green Program aims to reduce the environmental impact of Nissan vehicles at every stage of the vehicle life cycle, while corporate activities address environmental challenges.

**NISSAN'S commitment to quality:** to provide all customers with a consistently high level of quality, Nissan applies the standard worldwide, to ensure that all Nissan owners enjoy peace of mind for the lives of their vehicles. The approach is based on quality from the customer's perspective on three key elements: 1. The expectation of a smooth driving experience with complete peace of mind. 2. The intangible appeal of a vehicle, its power to captivate and excite, with features that capture attention and imagination. 3. The level of attentiveness and service during the sales process, and long after the sale is concluded.

Every effort has been made to ensure that the content of this brochure is correct at the time of going to print (April 2018). This brochure has been produced featuring prototype or accessorized vehicles exhibited at motor shows and, in accordance with the company's policy of continuously improving its products, Nissan South Africa reserves the right to change the specification and the vehicles described and shown in this brochure at any time. Nissan dealers will be informed of any such modifications as quickly as possible. Please check with your local Nissan dealer to receive the most up-to-date information. Due to the limitations of the printing processes used, the colours shown in this brochure may differ slightly from the actual colours of the paint and interior trim materials used. All rights reserved. Reproduction in whole or part of this brochure without the written permission from Nissan is forbidden.





Nissan Intelligent Mobility moves you one step ahead. In cars that feel like an extension of you, helping you see more and sense more, reacting with you, and sometimes even for you. Nissan Intelligent Mobility is about a better future – moving us to a world that's safer, more sustainable, and exciting.

**ORDER YOURS TODAY.**

# CROCO NISSAN

SSA Dealer Of The Year | SSA Sales & Aftersales Award Winners

**Harare.** 100 Seke Road, Graniteside, Harare - Tel: +263 24 275 0494/460/421 | Cell: +263 77 546 617/6

**Bulawayo.** 124 JMN Nkomo Street, Bulawayo - Tel: + 263 29 226 1032-33 | +263 29 227 3051/3201-2

**Masvingo.** 2 Robert Mugabe Street, Masvingo - Tel: +263 39 226 3608

**Mutare.** 99 Herbert Chitepo Corner Aerodrome Rd, Mutare - Tel: +263 20 61392/4/5/6

**Kadoma.** 325 J. Tongogara Road, Kadoma - Tel: +263 68 212 3327

**Chiredzi.** 323 Baobab Road, Chiredzi, Zimbabwe - Tel: +263 31 231 3392-6

**Selous.** 76 km Peg Bulawayo Road, Selous - Tel: +263 68 214 4886/7

[www.croconissan.co.zw](http://www.croconissan.co.zw) | [sales@croconissan.co.zw](mailto:sales@croconissan.co.zw)



*The journey continues...*

NISSAN  
X-TRAIL

NSC STAMP

[WWW.NISSANAFRICA.COM](http://WWW.NISSANAFRICA.COM) | T32201804LHDE