



MAGNITE





BEAUTIFULLY BOLD

Innovation that moves you

The all-new to the world Nissan MAGNITE is a car crafted around charisma. Purposefully designed to attract attention and project success, this dynamic urban SUV arrives fully loaded to not only look the part, but to move you with confidence wherever you go. There's a bold future waiting. Get in and take control.

MOVE BEYOND

Stand out every time you drive up

You are making your mark in the world, so stand out every time you drive up, with MAGNITE details to admire from every angle.



A

Dual Tone
Body Colour

B

Electric
Folding Mirrors

C

Dominating
Front Grille

D

Bi-Projector
LED Headlamps
With LED DRL's

E

16" Alloy
Wheels





7" Advanced Digital Driver Assist Display

Superior Touch-screen Technology

Automatic Climate Control

Front & Rear Electric Windows

Push Button Stop Start

A WORLD CONNECTED

Nissan A-IVI with Android Auto™ and Apple CarPlay®

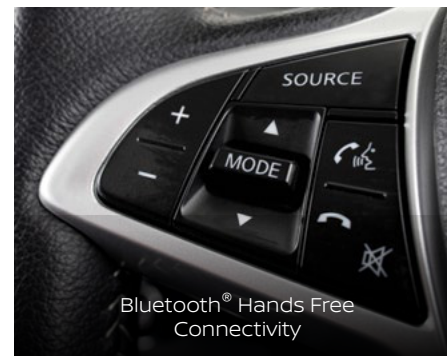
Whether you're navigating with maps in the MAGNITE or blasting your beats, stay connected with Android Auto™ and Apple CarPlay® through MAGNITE's full flush 8-inch touchscreen.



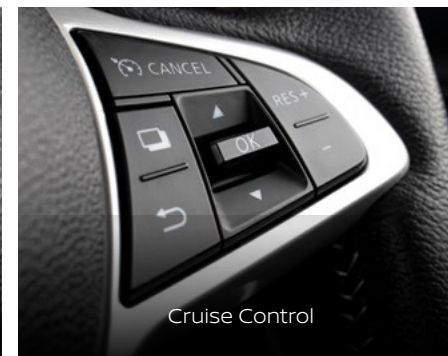
DIAL UP THE FUTURE

Ultra-high quality touch screen interface

Stay constantly informed, updated, front and centre, with a superior cockpit interface design. The show-stopping centre-stack's 5° tilt allows for maximum access to the console without diverting focus from the road. It's tech to connect all day, everyday.



Bluetooth® Hands Free Connectivity



Cruise Control



Advanced Digital Driver Assist Display



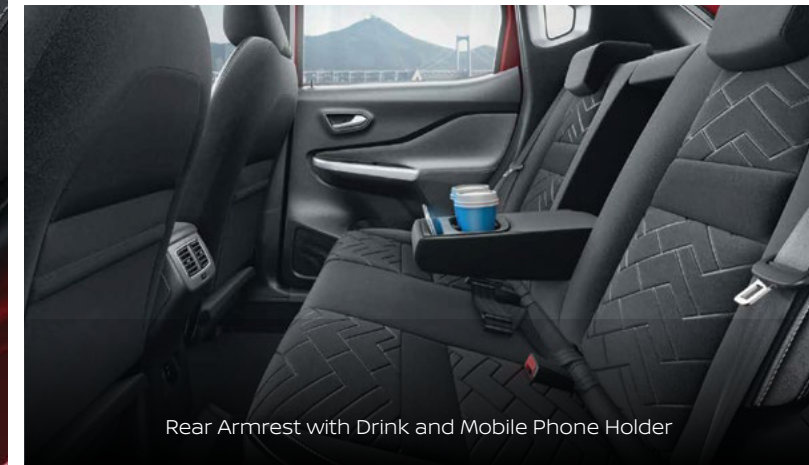
Tyre Pressure Monitor



PREMIUM INTERIOR

Comfort and convenience comes standard

Cross over to a new standard in compact SUV style with premium quality materials throughout. Admire MAGNITE attention to detail in the seat and door trim finishes, smart and practical storage compartments and enough ports to power the whole crew.



Rear Armrest with Drink and Mobile Phone Holder

ROOM TO MOVE

Compact SUV category leading cabin space

The all-new Nissan MAGNITE boasts best in class 700mm front seat distancing, for more space to be you. Then, get five-star reviews from your back seat drivers with yet another best in-class feature: Exceptional comfort and leg room.



10L Glove Box



Three Way Direction Driver Seat Adjustment



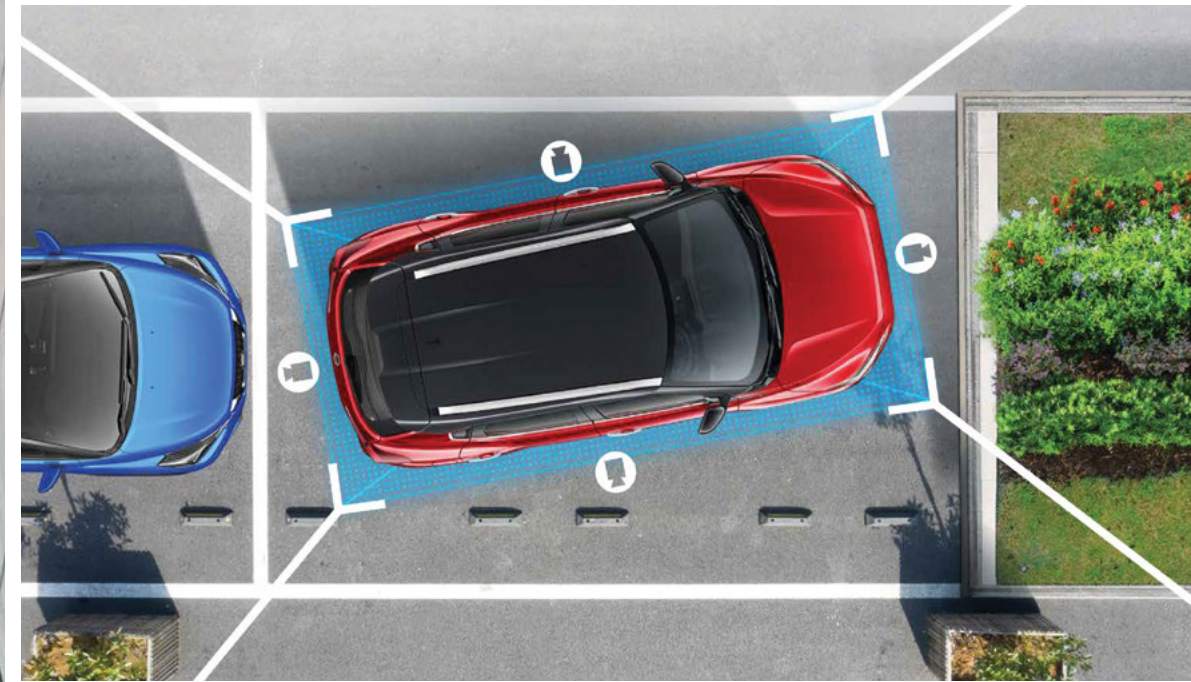
First In Class Rear Air-Conditioner Vents



PARK LIKE A PRO

Around View Monitor

The all-new MAGNITE offers Nissan Intelligent Mobility technology to give you all the confidence when you need it most. Around View Monitor (AVM) makes parking anywhere, effortless. Experience a virtual composite 360° bird's-eye view and selectable split-screen close-ups of the front, rear and curb side views.



Split Screen View



Rear View With Parking
Guide Lines



Side Curb View



205mm GROUND CLEARANCE

SUV CAPABILITY

Conquer the city streets in style

A bump in the road cannot stop you, nor can water clogged streets. Be unstoppable, no matter where you go with a high ground clearance and safety features that ensure you are always protected and always in control.



Dual Front Airbags

SUV SPACE

Load up for new adventures

336ℓ of cargo space with a 60:40 rear seat split makes packing extra for those longer trips, a breeze. Thoughtful use of storage spaces mean you can sit back and enjoy every journey. After all, you've got places to be and the Nissan MAGNITE will get you there effortlessly every time.





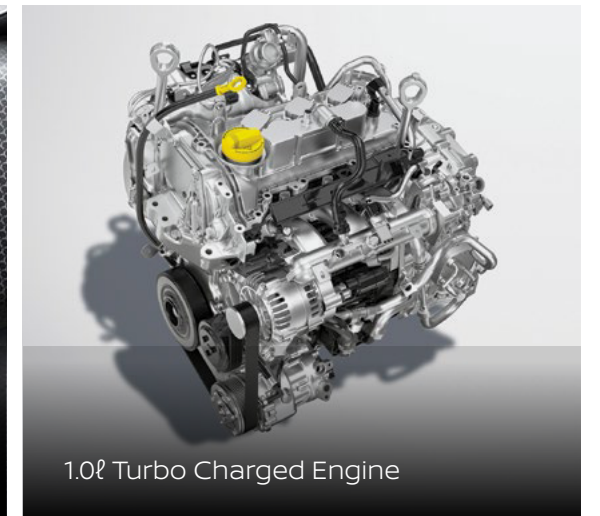
POWER YOUR PROGRESS

Turbo powered engine efficiency

Move ahead with 74kW of power and 160Nm of torque from the 1.0 ℓ turbo-charged engine. Expect maximum city acceleration with minimal fuel consumption.



Exceptional Fuel Consumption with MAGNITE ECO Scoring and Coaching



1.0 ℓ Turbo Charged Engine

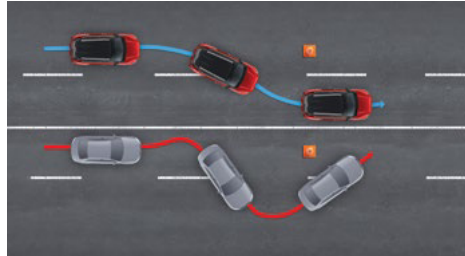


CVT Transmission

SAFETY AS A PRIORITY

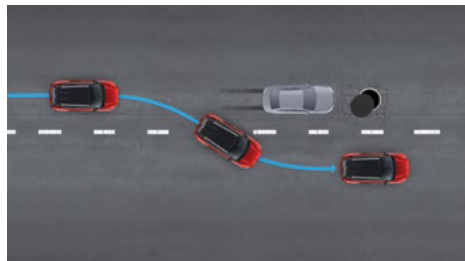
Shifting gears and changing lanes with authority

No matter where your journey takes you and no matter the driving conditions, the new Nissan MAGNITE is designed with the latest on-road safety technology to get you there with confidence.



VEHICLE DYNAMIC CONTROL

Equipped with Vehicle Dynamic Control (VDC), the all-new Nissan MAGNITE takes instant control when the road takes an unexpected turn.



ANTI-LOCK BRAKING SYSTEM (ABS) WITH ELECTRONIC BRAKE-FORCE DISTRIBUTION (EBD)

Intuitive safety systems which intervene under extreme braking conditions in unforeseen situations.



TRACTION CONTROL

MAGNITE'S Traction Control System (TCS) applies maximum control in situations where grip can easily be lost. Handle loose sand and slippery wet roads with ease.



HILL START ASSIST

In the all-new Nissan MAGNITE there's never an uphill battle. Hill Start Assist (HSA) ensures your climb to the top is steady and sure, without any roll-back.



Turn brand new into all you



Flare Garnet Red / Onyx Black



Storm White



Blade Silver



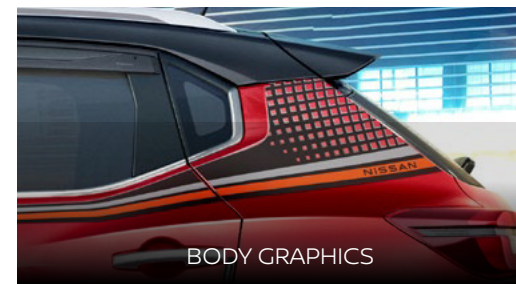
Vivid Blue / Storm White



Pearl White / Onyx Black



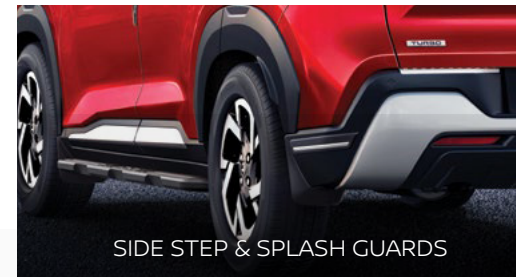
Blade Silver / Onyx Black



BODY GRAPHICS



TAIL GATE ENTRY GUARD



SIDE STEP & SPLASH GUARDS



WIRELESS CHARGER

BASE GRADE ACENTA 5MT

BODY TYPE
■ 5-DOOR

SEATING CAPACITY
■ 5

ENGINE, POWER, TRANSMISSION
■ Petrol HRAO 999c, 3 Cylinders Engine
■ 74kW @ 5000 rpm & 160 Nm @ 2800 - 3600rpm
■ 5 Speed Manual Transmission

INTERIOR AND CONVENIENCE
■ Cloth Upholstery
■ 7" TFT Advanced Driver Assist Display
■ 8" Display Audio (AM/FM+RDS+USB+BT+WIFI+Apple Carplay + Andriod Auto)
■ 6 Speakers
■ Cruise Control + Adjustable Speed Limiter
■ Bluetooth Hands Free Connectivity
■ Steering Wheel Controls
■ Auto Air-Conditioner
■ Front & Rear Electric Windows
■ Intelligent Key with Push Start Button
■ Front 12V Power Socket

EXTERIOR
■ 16" Machined Alloy Two Tone
■ Body Colour Bumpers
■ Body Coloured Mirrors
■ Electric Foldable & Adjust Mirrors
■ Chrome Door Handles
■ LED Foglamps & LED DRL's
■ Halogen Headlamps
■ Rear Roof Spoiler
■ Drive Computer

SAFETY
■ Dual Front Airbags
■ Traction Control, ABS, EBD, HBA
■ Vehicle Dynamic Control
■ Hill Start Assist
■ Rear Parking Camera
■ Rear Parking Sensors
■ ISOFIX Child Seat Anchorage

SERVICE & WARRANTY
■ Service Intervals (Enquire at the dealership)
■ Warranty (Enquire at the dealership)

HIGH GRADE ACENTA PLUS CVT ADDITIONAL TO BASE

TRANSMISSION
■ CVT Automatic

INTERIOR AND CONVENIENCE
■ Front & Rear 12V Power Socket

EXTERIOR
■ LED Bi-Projector Headlamps

SAFETY
■ Around View Monitor

Nissan's commitment to quality: To provide all customers with a consistently high level of quality, Nissan applies the same standards worldwide, to ensure that all Nissan owners enjoy peace of mind for the lives of their vehicles. The approach is based on quality from the customer's perspective on three key elements: First, the expectation of a smooth driving experience with complete peace of mind. Second, the intangible appeal of a vehicle, its power to captivate and excite, with features that capture attention and imagination. Third, the level of attentiveness and service during the sales process, and long after the sale is concluded.

Legal notice: Every effort has been made to ensure that the contents of this brochure is correct at the time of going to print (July 2021). This brochure may be produced featuring prototype or accessorised vehicles exhibited at motorshows and in accordance with the company's policy of continuously improving its products. Nissan South Africa reserves the right to change the specifications and the vehicles described and shown in this brochure at any time. Nissan dealers will be informed of any such modifications as quickly as possible. Please check with your local Nissan dealer to receive the most up-to-date information. Due to the limitations of the printing process used, the colours shown in this brochure may differ slightly from the actual colours of the paint and interior trim material used. All rights reserved. Reproduction in whole or part of this brochure without the written permission from Nissan is forbidden. Nissan dealers will be informed of any such modifications as quickly as possible. Please check with your local Nissan dealer to receive the most up-to-date information. Due to the limitations of the printing process used, the colours shown in this brochure may differ slightly from the actual colours of the paint and interior trim material used. All rights reserved. Reproduction in whole or part of this brochure without the written permission from Nissan is forbidden.

NISSAN
AFTERSALES
OUR PROMISE. YOUR EXPERIENCE

AT NISSAN WE KEEP OUR PROMISES AND TAKE CARE OF OUR FAMILY

Servicing and repairing your Nissan at an authorised Nissan dealership is the way to go. Our Nissan technicians are highly trained specialists that know your Nissan better than anyone. They will use Genuine Nissan Parts, Genuine Nissan Accessories to ensure quality, reliability and to keep your vehicle performing to optimum standards. Nissan aims to keep you and your vehicle on the road with total peace of mind - for as long as possible. That is the Nissan Aftersales commitment.



Nissan's commitment to the environment

Nissan's environmental philosophy embraces people, vehicles and nature. In the pursuit of a sustainable mobile society, the Nissan Green Program aims to reduce the environmental impact of Nissan vehicles at every stage of the vehicle life cycle, while corporate activities address environmental challenges.

Nissan MAGNITE

Specifications & Features

MODEL	Acenta SMT		Acenta CVT	
ENGINE				
Engine Displacement	cc	999	999	
Number Of Cylinders		3	3	
Maximum Power	kW @ rpm	74 @ 5000	74 @ 5000	
Maximum Torque	Nm @ rpm	160 @ 2800-3600	152 @ 2200-4400	
Top Speed	km/h	173	168	
Fuel Type		Petrol	Petrol	
Fuel Tank Capacity	ℓ	40	40	
Fuel Consumption: Urban Cycle	ℓ/100km	6.39	7.36	
Extra-Urban	ℓ/100km	4.61	5.20	
Combined	ℓ/100km	5.27	6.00	
Push Start Button		Standard	Standard	
Co2 Emissions - Combined	g/km	125,49	142,42	
Emissions Level		BS6 (EUR5)	BS6 (EUR5)	
TRANSMISSION & DRIVE TRAIN				
Transmission		5-Speed Manual	CVT	
Gear Ratio	1st	3,727	4.006 - 0.5500	
	2nd	1,957	-	
	3rd	1,233		
	4th	0,903		
	5th	0,689		
	Reverse	3,546		3,771
	Final Drive	4,214	3,754	
Driven Wheels		2WD	2WD	
CHASSIS				
Suspension Front		Mac Pherson Strut With Lower Transverse Link	Mac Pherson Strut With Lower Transverse Link	
Suspension Rear		Twin Tube Telescopic Shock Absorber	Twin Tube Telescopic Shock Absorber	
Stabilizer Bar		Standard		
WEIGHTS & DIMENSIONS				
Gross Vehicle Mass (GVM)	kg	1460	1483	
Overall Length	mm	3994	3994	
Overall Width Without Mirrors	mm	1758	1758	
Overall Height (Unladen)	mm	1572	1572	
Wheelbase	mm	2500	2500	
Track (Tread) : Front / Rear	mm	1536/1535	1536/1535	
Overhang: Front / Rear	mm	787/707	787/707	
Ground Clearance	mm	205	205	
Turning Radius (Curb to Curb)	m	5,0	5,0	
Maximum Roof Load	kg	50	50	
Luggage Capacity VDA	ℓ	336	336	
WHEELS & TYRES				
Wheel Size & Type		16" Machined Alloy 2 Tone	16" Machined Slloy 2 Tone	
Wheel Dimensions		195/60R16	195/60R16	
Spare Tyre		Full Size	Full Size	
EXTERIOR				
Front & Rear Bumper: Body Colour		Standard	Standard	
Exterior Door Mirror		Body Colour	Body Colour	
Electric Adjustable Door Mirror		Electric Fold + Electric Adjust	Electric fold + Electric Adjust	
Exterior Door Handle		Chrome Door Handle	Chrome Door Handle	

Headlamp Type		Halogen	Halogen
Headlight Leveliser System		Manual	Manual
Signature LED Daytime Running Lights		Standard	Standard
Front Wipers		Variable Intermittent	Variable Intermittent
Rear Wiper		Standard	Standard
Led Front Fog Lights		Standard	Standard
Rear Roof Spoiler		Standard	Standard
COMFORT & CONVENIENCE			
Seat Upholstery		Cloth	Cloth
Manual 3-Way Driver Seat Adjustment		Standard	Standard
Manual 2-Way Passenger Seat Adjustment		Standard	Standard
60/40 Rear Seat Split		Standard	Standard
7inch Tft Advanced Drive-Assist Display		Standard	Standard
Manual Anti-Dazzle Rearview Mirror		Standard	Standard
Outside Thermometer		Standard	Standard
Cruise Control + Adjustable Speed Limiter		Standard	Standard
Steering Wheel Material		Leather	Leather
Shift Lever		Urethane	Urethane
Electric Power Steering (EPS)		Standard	Standard
Manual Tilt Steering Wheel Adjustment		Standard	Standard
Front And Rear Electric Windows		Standard	Standard
Remote Central Locking		Standard	Standard
Smart Entry (Intelligent Key) With Push Start System		Standard	Standard
Audio System		8" Display Audio (AM/FM+RDS+USB+BT+WIFI+Apple Carplay + Andriod Auto)	8" Display Audio (AM/FM+RDS+USB+BT+WIFI+Apple Carplay + Andriod Auto)
Number Of Speakers		6	6
Handsfree Bluetooth Connectivity		Standard	Standard
Steering Wheel Controls		Standard	Standard
Front/Rear Cup Holders		Standard	Standard
Air-Conditioner		Auto	Auto
Tyre Pressure Monitoring System (TPMS)		Standard	Standard
12V Power Socket		Front Centre Console	Front Centre Console
SAFETY AND SECURITY			
Dual Front Airbags		Standard	Standard
3 Point Driver Seat Belts With Pretensioner & Load Limiter		Standard	Standard
3 Point Passenger Seat Belts With Pretensioner & Load Limiter		Standard	Standard
Rear Seat Belt (ELR)		Standard	Standard
Anti-Lock Braking System (ABS)		Standard	Standard
Electronic Brake-force Distribution (EBD)		Standard	Standard
Hydraulic Brake Assist (HBA)		Standard	Standard
Vehicle Dynamic Control (VDC)		Standard	Standard
Traction Control System		Standard	Standard
Hill Start Assist (HSA)		Standard	Standard
ISOFIX Child Seat Anchorage		Standard	Standard
Immobiliser + Alarm		Standard	Standard
Rear Parking Camera		Standard	Standard
Around View Monitor		N/A	N/A
Rear Parking sensors		Standard	Standard
SERVICE & WARRANTY			
Service Intervals		Enquire at the dealership	Enquire at the dealership
Warranty		Enquire at the dealership	Enquire at the dealership

Nissan MAGNITE

Specifications & Features

MODEL		Acenta Plus SMT	Acenta Plus CVT
ENGINE			
Engine Displacement	cc	999	999
Number Of Cylinders		3	3
Maximum Power	kW @ rpm	74 @ 5000	74 @ 5000
Maximum Torque	Nm @ rpm	160 @ 2800-3600	152 @ 2200-4400
Top Speed	km/h	173	168
Fuel Type		Petrol	Petrol
Fuel Tank Capacity	ℓ	40	40
Fuel Consumption: Urban Cycle	ℓ/100km	6.39	7.36
Extra-Urban	ℓ/100km	4.61	5.20
Combined	ℓ/100km	5.27	6.00
Push Start Button		Standard	Standard
Co2 Emissions - Combined	g/km	125,49	142,42
Emissions Level		BS6 (EUR5)	BS6 (EUR5)
TRANSMISSION & DRIVE TRAIN			
Transmission		5-Speed Manual	CVT
Gear Ratio	1st	3,727	4.006 - 0.5500
	2nd	1,957	-
	3rd	1,233	
	4th	0,903	
	5th	0,689	
	Reverse	3,546	
	Final Drive	4,214	3,754
Driven Wheels		2WD	2WD
CHASSIS			
Suspension Front		Mac Pherson Strut With Lower Transverse Link	Mac Pherson Strut With Lower Transverse Link
Suspension Rear		Twin Tube Telescopic Shock Absorber	Twin Tube Telescopic Shock Absorber
Stabilizer Bar		Standard	Standard
WEIGHTS & DIMENSIONS			
Gross Vehicle Mass (GVM)	kg	1460	1483
Overall Length	mm	3994	3994
Overall Width Without Mirrors	mm	1758	1758
Overall Height (Unladen)	mm	1572	1572
Wheelbase	mm	2500	2500
Track (Tread) : Front / Rear	mm	1536/1535	1536/1535
Overhang: Front / Rear	mm	787/707	787/707
Ground Clearance	mm	205	205
Turning Radius (Curb to Curb)	m	5,0	5,0
Maximum Roof Load	kg	50	50
Luggage Capacity VDA	ℓ	336	336
WHEELS & TYRES			
Wheel Size & Type		16" Machined Alloy 2 Tone	16" Machined Slloy 2 Tone
Wheel Dimensions		195/60R16	195/60R16
Spare Tyre		Full Size	Full Size
EXTERIOR			
Front & Rear Bumper: Body Colour		Standard	Standard
Exterior Door Mirror		Body Colour	Body Colour
Electric Adjustable Door Mirror		Electric Fold + Electric Adjust	Electric fold + Electric Adjust
Exterior Door Handle		Chrome Door Handle	Chrome Door Handle

Headlamp Type		LED Bi Projector Headlamp	LED Bi Projector Headlamp
Headlight Leveliser System		Manual	Manual
Signature LED Daytime Running Lights		Standard	Standard
Front Wipers		Variable Intermittent	Variable Intermittent
Rear Wiper		Standard	Standard
Led Front Fog Lights		Standard	Standard
Rear Roof Spoiler		Standard	Standard
COMFORT & CONVENIENCE			
Seat Upholstery		Cloth	Cloth
Manual 3-Way Driver Seat Adjustment		Standard	Standard
Manual 2-Way Passenger Seat Adjustment		Standard	Standard
60/40 Rear Seat Split		Standard	Standard
7inch Tft Advanced Drive-Assist Display		Standard	Standard
Manual Anti-Dazzle Rearview Mirror		Standard	Standard
Outside Thermometer		Standard	Standard
Cruise Control + Adjustable Speed Limiter		Standard	Standard
Steering Wheel Material		Leather	Leather
Shift Lever		Urethane	Urethane
Electric Power Steering (EPS)		Standard	Standard
Manual Tilt Steering Wheel Adjustment		Standard	Standard
Front And Rear Electric Windows		Standard	Standard
Remote Central Locking		Standard	Standard
Smart Entry (Intelligent Key) With Push Start System		Standard	Standard
Audio System		8" Display Audio (AM/FM+RDS+USB+BT+WIFI+Apple Carplay + Andriod Auto)	8" Display Audio (AM/FM+RDS+USB+BT+WIFI+Apple Carplay + Andriod Auto)
Number Of Speakers		6	6
Handsfree Bluetooth Connectivity		Standard	Standard
Steering Wheel Controls		Standard	Standard
Front/Rear Cup Holders		Standard	Standard
Air-Conditioner		Auto	Auto
Tyre Pressure Monitoring System (TPMS)		Standard	Standard
12V Power Socket		Front centre & rear centre console	Front centre & rear centre console
SAFETY AND SECURITY			
Dual Front Airbags		Standard	Standard
3 Point Driver Seat Belts With Pretensioner & Load Limiter		Standard	Standard
3 Point Passenger Seat Belts With Pretensioner & Load Limiter		Standard	Standard
Rear Seat Belt (ELR)		Standard	Standard
Anti-Lock Braking System (ABS)		Standard	Standard
Electronic Brake-force Distribution (EBD)		Standard	Standard
Hydraulic Brake Assist (HBA)		Standard	Standard
Vehicle Dynamic Control (VDC)		Standard	Standard
Traction Control System		Standard	Standard
Hill Start Assist (HSA)		Standard	Standard
ISOFIX Child Seat Snchorage		Standard	Standard
Immobiliser + Alarm		Standard	Standard
Rear Parking Camera		N/A	N/A
Around View Monitor		Standard	Standard
Rear Parking sensors		Standard	Standard
SERVICE & WARRANTY			
Service Intervals		Enquire at the dealership	Enquire at the dealership
Warranty		Enquire at the dealership	Enquire at the dealership



Nissan Intelligent Mobility moves you one step ahead. In cars that feel like an extension of you, helping you see more and sense more, reacting with you, and sometimes even for you. Nissan Intelligent Mobility is about a better future - moving us to a world that's safer, more sustainable, and exciting.

ORDER YOURS TODAY.

CROCO NISSAN

SSA Dealer Of The Year | SSA Sales & Aftersales Award Winners

Harare. 100 Seke Road, Graniteside, Harare - Tel: +263 24 275 0494/460/421 | Cell: +263 77 546 617/6

Bulawayo. 124 JMN Nkomo Street, Bulawayo - Tel: + 263 29 226 1032-33 | +263 29 227 3051/3201-2

Masvingo. 2 Robert Mugabe Street, Masvingo - Tel: +263 39 226 3608

Mutare. 99 Herbert Chitepo Corner Aerodrome Rd, Mutare - Tel: +263 20 61392/4/5/6

Kadoma. 325 J. Tongogara Road, Kadoma - Tel: +263 68 212 3327

Chiredzi. 323 Baobab Road, Chiredzi, Zimbabwe - Tel: +263 31 231 3392-6

Selous. 76 km Peg Bulawayo Road, Selous - Tel: +263 68 214 4886/7

www.croconissan.co.zw | sales@croconissan.co.zw



The journey continues...

NISSAN
MAGNITE

NSC STAMP

WWW.NISSANAFRICA.COM | EM2202107RHD